

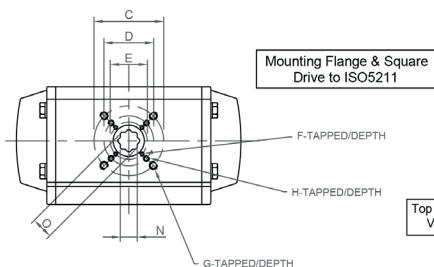
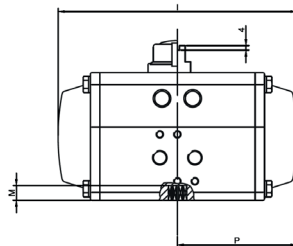
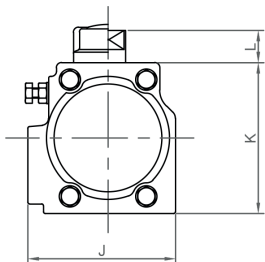
HP Pneumatic Actuator

HP Pneumatic Actuator for Albion ball and butterfly valves

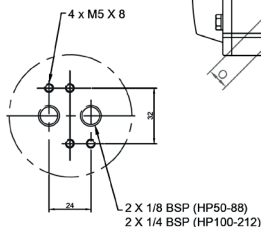


Features

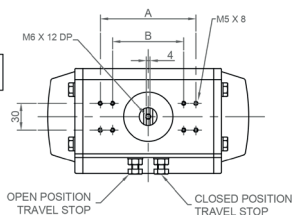
- Double acting and spring return models
- Hard anodised aluminium housing
- Wide range of torque & control options available



Mounting Flange & Square Drive to ISO5211



Top Flange acc. to VDI/VDE 3845 (Namur)



HPS/HPD	50	63	66	75	88	100	115	HPS/HPD	125	145	160	180	200	211	212
A	-	-	-	-	-	-	-	A	-	130	130	130	130	130	130
B	80	80	80	80	80	80	80	B	80	80	80	80	80	-	-
C	50	70	70	70	102	102	102	C	125	125	125	125	140	165	165
D	36	50	50	50	70	70	70	D	102	102	102	102	-	-	-
E	-	-	-	-	50	50	-	E	70	-	-	-	-	-	-
F	-	-	-	-	M6/9	M6/9	-	F	M8/12	-	-	-	-	-	-
G	M6/9	M8/12	M8/12	M8/12	M10/15	M10/15	M10/15	G	M12/18	M12/18	M12/18	M12/18	M16/24	M20/30	M20/30
H	M5/8	M6/9	M6/9	M6/9	M8/12	M8/12	M8/12	H	M10/15	M10/15	M10/15	M10/15	-	-	-
I	144	163	202	210	247	268	316	I	347	414	467	497	555	669/504*	1022/644*
J	72	85	85	96	108	123	141	J	151	172	190	206	227	236	236
K	73	87	87	104	116	128	146	K	159	179	196	221	247	256	256
L	20	20	20	20	20	20	20	L	20	30	30	30	30	30	30
M	14	18	18	22	22	22	32	M	32	36	36	39	39	54	54
N	11	14	14	17	17	17	22	N	22	27	27	36	36	46	46
O	14.2	18.2	18.2	22.2	22.2	22.2	28.2	O	28.2	36.2	36.2	48.2	48.2	60.2	60.2
P	72.0	81.5	101.0	105.0	123.5	134.0	158.0	P	173.5	207.0	233.5	248.5	277.5	190	511/322*

*Double Acting version. For torque information please contact the sales office.

V3 Dimensions in mm

This data sheet is designed as a guide and should not be regarded as wholly accurate in every detail. We reserve the right to amend the specification of any product without notice.