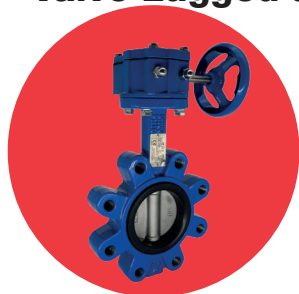


# ART 135GB PN25

## PN25 Ductile Iron Butterfly Valve Lugged and Tapped



### Features

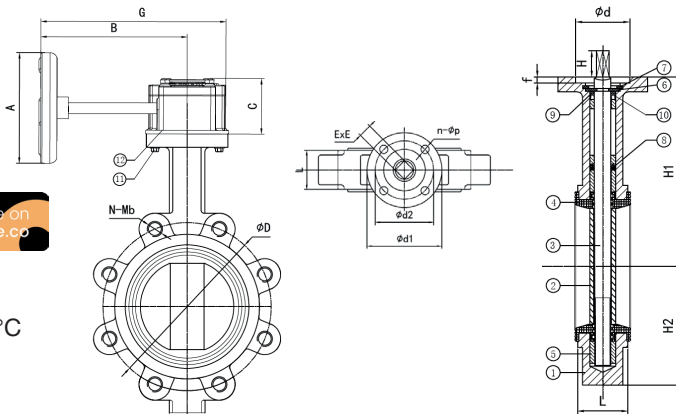
- Flange mounting PN25 only
- BS5155 (BS EN 593)
- ISO 5211 direct mount
- Epoxy coat finish
- Vulcanised liner



### Technical data

Max pressure: 25 Bar

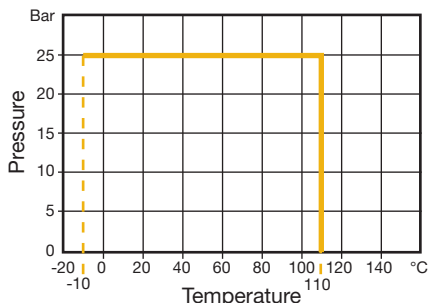
Working temp: -10°C to +110°C



DN	50	65	80	100	125	150	200	250	300
H1	141	153	161	179	193	204	247	280	324
H2	61	85	92	108	126	140	174	205	237
ØD	125	145	160	190	220	250	310	370	430
N-Mb	4-M16	8-M16	8-M16	8-M20	8-M24	8-M24	12-M24	12-M27	16-M27
Ød	56	56	56	56	56	56	71	71	71
Ød1	90	90	90	90	90	90	125	125	125
Ød2	70	70	70	70	70	70	102	102	102
f	3	3	3	3	3	3	3	3	3
ExE	11	11	11	11	14	14	17	22	22
L	43	46	46	52	56	56	60	68	78
n-Øp	4-Ø10	4-Ø10	4-Ø10	4-Ø10	4-Ø10	4-Ø10	4-Ø12	4-Ø12	4-Ø12
H	19	19	19	19	19	19	25	30	30
ØA	122	122	122	122	122	122	200	200	200
B	161	161	161	161	161	161	194	194	194
C	60	60	60	60	60	60	72	72	72
G	207	207	207	207	207	207	257	257	257
ISO	F07	F07	F07	F07	F07	F07	F10	F10	F10
Torque	22	26	36	73	90	106	290	400	510
Kv	118	258	510	926	1500	2170	3842	5014	9230
Kgs	6.25	8.25	8.75	11.75	18.25	18.75	33.0	47.0	69.0

### N. Part Name Materials

1	Body	Ductile Iron GGG40
2	Disc	Stainless Steel 316 (CF8M)
3	Shaft	Stainless Steel 431
4	Seat	EPDM
5	Bushing	Brass H69
6	Cotter Pin	Spring Steel 65Mn
7	Circlip	Spring Steel 65Mn
8	O-Ring	EPDM
9	Gasket	PTFE
10	Sealing Ring	NBR
11	Bolt	A2-70
12	Gearbox	Ductile Iron



V3. Dimensions in mm

This data sheet is designed as a guide and should not be regarded as wholly accurate in every detail. We reserve the right to amend the specification of any product without notice.